



ARC Centre of Excellence  
Coral Reef Studies

# *Adapting to Climate Change at Multiple Governance Levels*

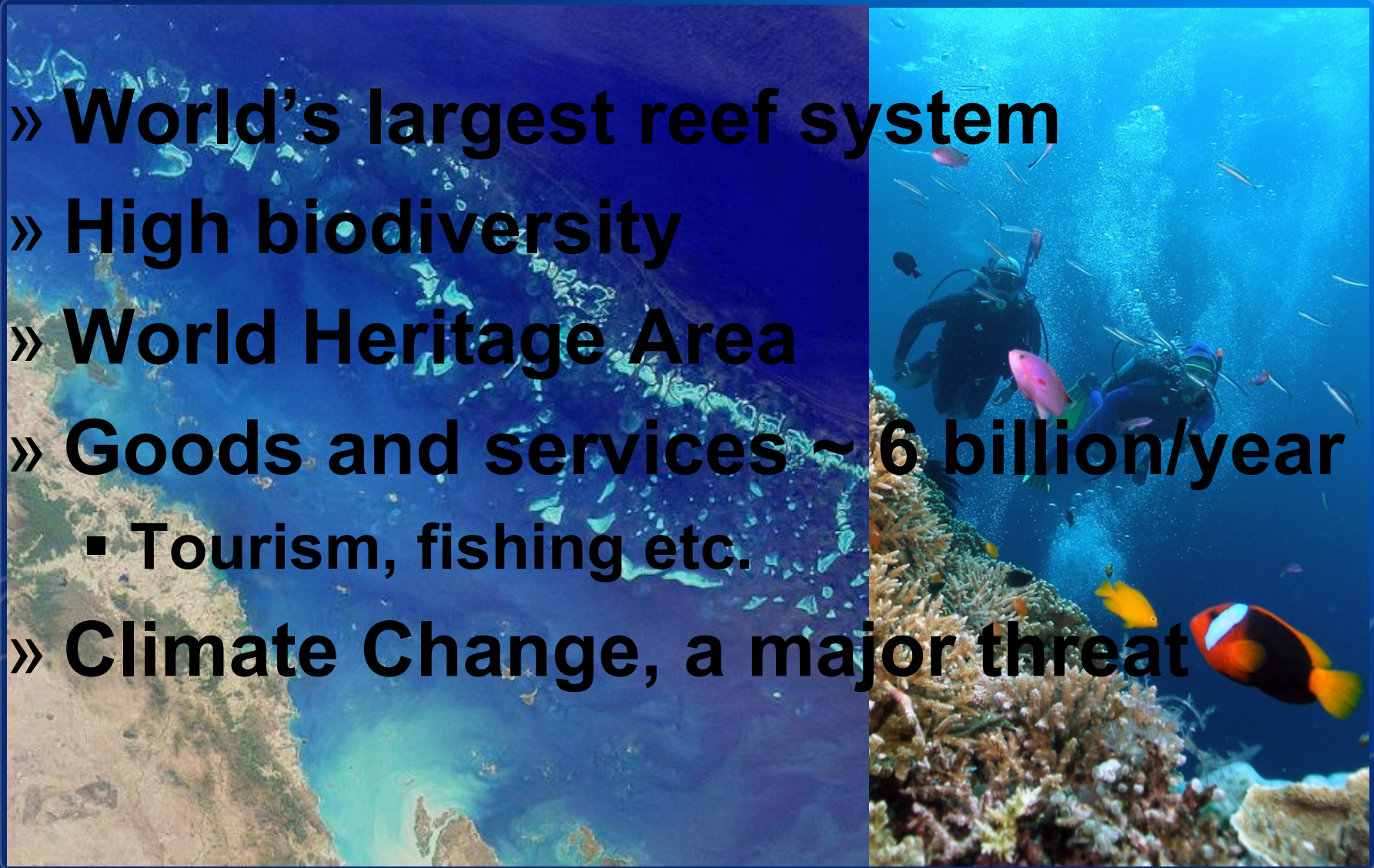
*Pedro Fidelman, Anne Leitch,  
Don Nelson & Terry Hughes*

[www.coralcoe.org.au](http://www.coralcoe.org.au)



# The Great Barrier Reef

- » **World's largest reef system**
- » **High biodiversity**
- » **World Heritage Area**
- » **Goods and services ~ 6 billion/year**
  - Tourism, fishing etc.
- » **Climate Change, a major threat**





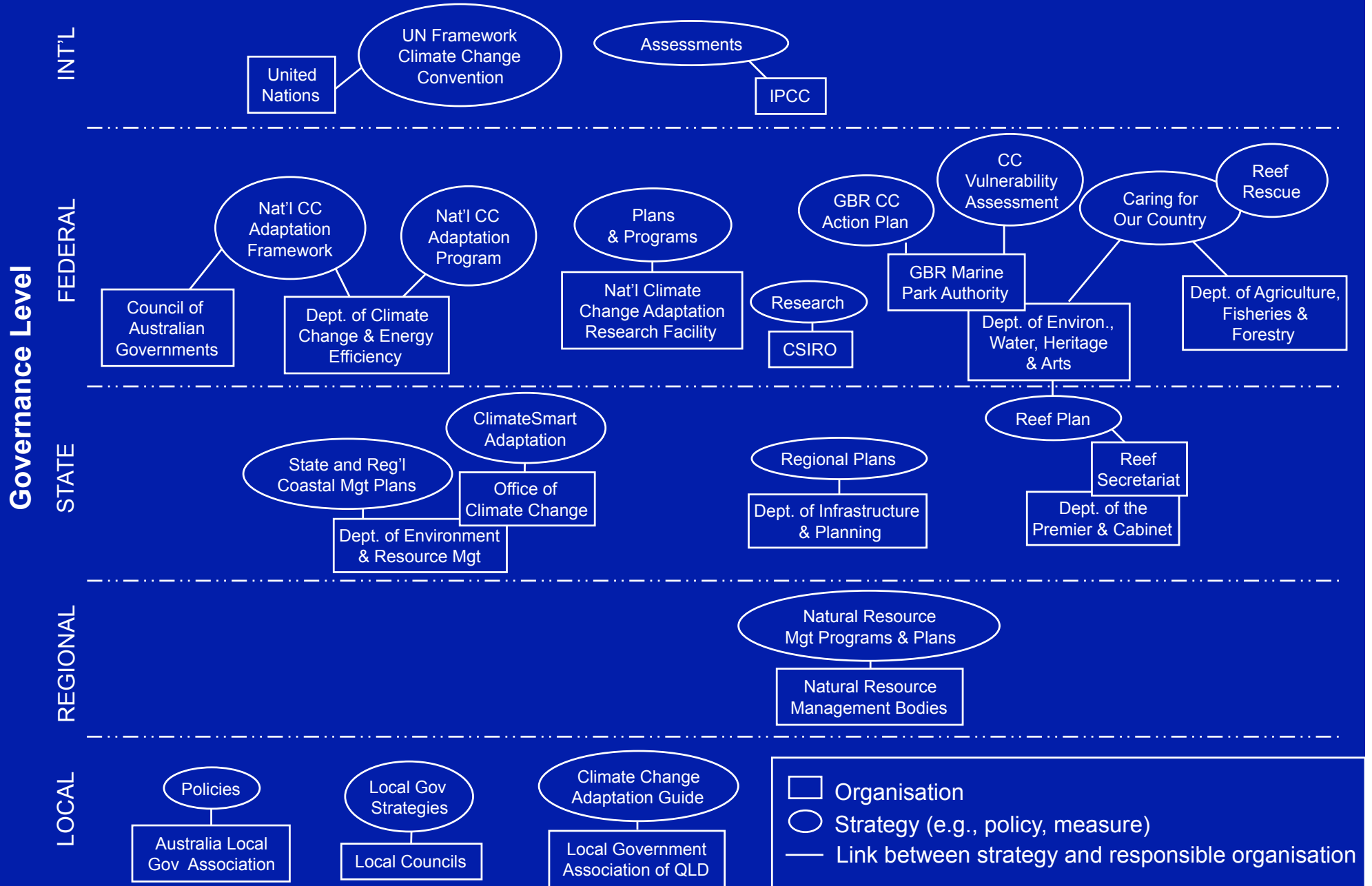
- Who makes adaptation decisions?
  - » Governments
    - national, state, local
  - » Society
    - individuals, organisations, networks
  - » Business & Industry
    - fishing, tourism, agriculture etc.



## Who makes adaptation decisions?

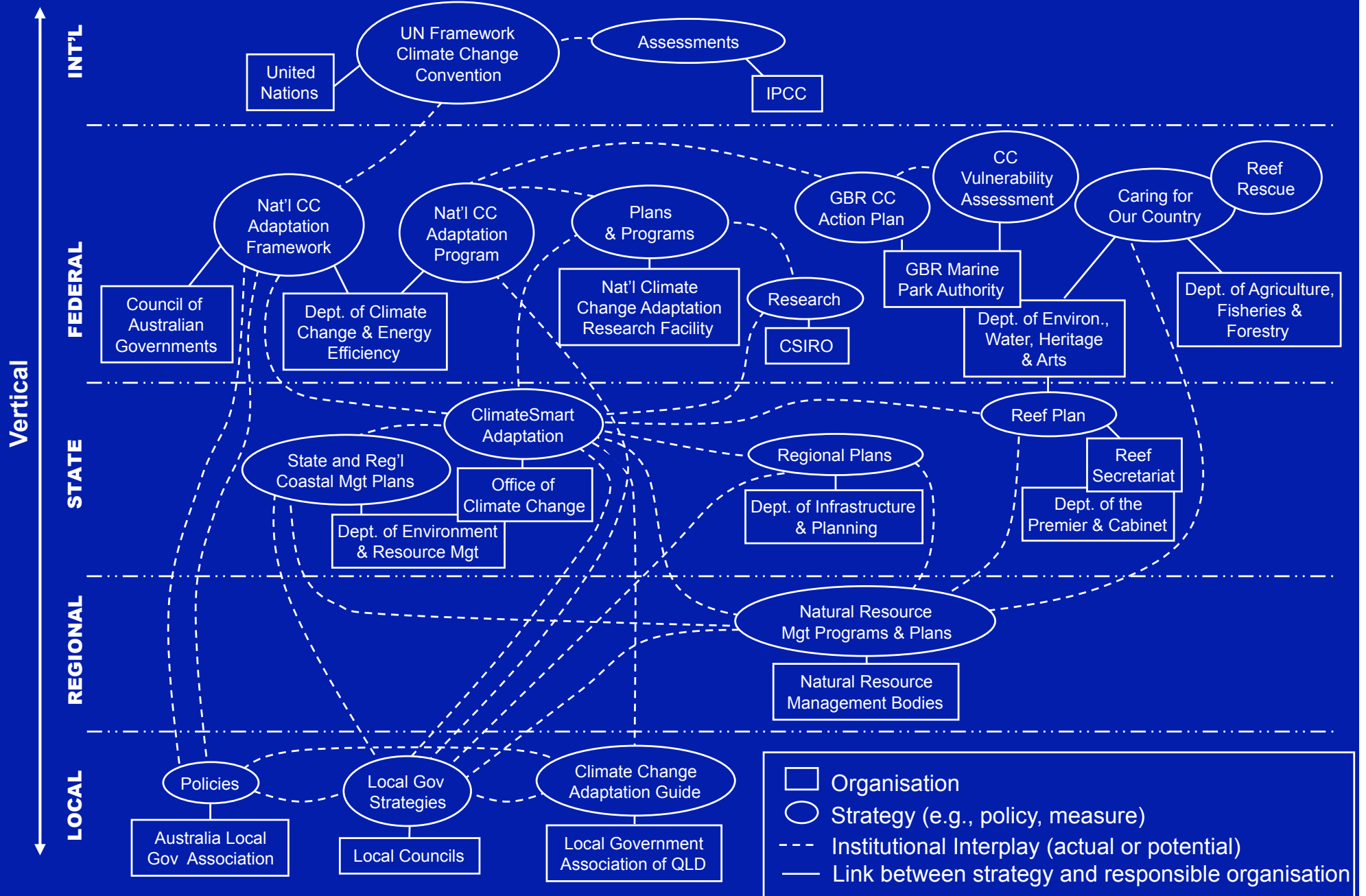
Level	Actor	Responsibility
Cross-level	Council of Australian Governments (COAG)	Policies that require cooperative action by multiple levels of government
Federal	Department of Climate Change & Energy Efficiency	Implementation of parts of the National Climate Change Adaptation Framework.
	Great Barrier Reef Marine Park Authority	Management of the Great Barrier Reef Marine Park
State	Queensland Office of Climate Change	Coordination, implementation and review of Queensland's climate change strategies
Local	Local Councils	Wide range of land use and planning activities

# Organisations and Adaptation Strategies



# Institutional Interplay

Horizontal





- **Adaptation, a complex process:**
  - » Interplay is pervasive
  - » Interplay involves multiple scales and levels of governance (i.e., horizontal & vertical interplay)
  - » Interplay can involve several policy systems and sub-systems (e.g., environment, regional planning, economy)
  - » Interplay can either foster or constrain adaptation
  - » *Adaptation is governed by interplay*

Print Email Share

## Palmer, Bligh in \$69b China coal deal

By Kerrin Binnie

Posted Sat Feb 6, 2010 3:19pm AEDT

Updated Sat Feb 6, 2010 3:50pm AEDT

**Queensland billionaire Clive Palmer has signed a deal to sell millions of tonnes of coal to China in what's believed to be Australia's largest export contract.**

Mr Palmer says the \$69 billion, 20-year offtake deal was signed last Friday with China Power International.

Another \$8.6 billion agreement was signed with the Metallurgical Corporation of China to build the project in central Queensland.

Mr Palmer's Resourcehouse wants to develop a 40 million-tonne-a-year thermal coal mine in the Galilee Basin, near Alpha, west of Emerald.

"That's the biggest coal mine in the world in one go I think you'll find," Mr Palmer said.



Four underground mines and two open cut mines will be developed, as well as a new coal port (AAP : Dean Lewins)





- **Policy design, implementation & assessment:**
  - » Consider complexities of multi-level governance
  - » Consider broader governance regimes (e.g., multi-sector governance)
  - » Develop understanding of how strategies reinforce or constrain other strategies
  - » Coordinate strategies to promote synergies and “*spillover*” effects



ARC Centre of Excellence  
Coral Reef Studies

## **\*\* Acknowledgement \*\***



*[Pedro.Fidelman@jcu.edu.au](mailto:Pedro.Fidelman@jcu.edu.au)*